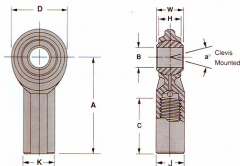


MSF



PART NO.		DIMENSIONS IN INCHES										Radial Static Load Cap. Lbs.	Approx. Brg. Wt. Lbs.	
Right Hand	Left Hand	B + .0015 - .0005	W + .000 - .005	H Ref	A ± .015	D ± .010	K ± .010	J ± .010	Ball Dia. Ref.	C + .062 - .031	Thread UNF-2B			a° Misalign. Angle
MSF3*	MSFL3*	1900	312	234	1.062	.625	.406	.312	.437	500	10-32	17	2,028	.04
MSF4	MSFL4	2500	375	.250	1.312	.750	.469	.375	500	.687	1/4-28	21	3,114	.05
MSF5	MSFL5	3125	437	.312	1.375	.875	.500	.437	.625	.687	5/16-24	17	3,721	.08
MSF6	MSFL6	3750	500	.359	1.625	1.000	.687	.562	.719	.812	3/8-24	19	4,929	.13
MSF7	MSFL7	4375	562	.406	1.812	1.125	.750	.625	.812	.937	7/16-20	18	6,215	.18
MSF8	MSFL8	5000	625	.453	2.125	1.312	.875	.750	.937	1.062	1/2-20	17	8,779	.29
MSF10	MSFL10	6250	.750	.484	2.500	1.500	1.000	.875	1.125	1.375	5/8-18	22	9,509	.43
MSF12	MSFL12	7500	.875	.593	2.875	1.750	1.125	1.000	1.312	1.562	3/4-16	18	13,831	.65

PART NO.		DIMENSIONS IN MILLIMETERS										Radial Static Load Cap. Kilograms	Approx. Brg. Wt. Grams	
Right Hand	Left Hand	B + .0635 - .0127	W + .000 - .127	H Ref	A ± .381	D ± .254	K ± .254	J ± .254	Ball Dia. Ref.	C + 1.574 - .787	Thread UNF-2B			a° Misalign. Angle
MSF3*	MSFL3*	4.83	7.92	5.94	26.97	15.88	10.31	7.92	11.10	12.70	10-32	17	920	18
MSF4	MSFL4	6.35	9.53	6.35	33.32	19.05	11.91	9.53	12.70	17.45	1/4-28	21	1,413	23
MSF5	MSFL5	7.94	11.10	7.92	34.93	22.23	12.70	11.10	15.88	17.45	5/16-24	17	1,688	36
MSF6	MSFL6	9.53	12.70	9.12	41.28	25.40	17.45	14.27	18.26	20.62	3/8-24	19	2,236	59
MSF7	MSFL7	11.11	14.27	10.31	46.02	28.58	19.05	15.88	20.62	23.80	7/16-20	18	2,819	82
MSF8	MSFL8	12.70	15.88	11.50	53.98	33.32	22.23	19.05	23.80	26.97	1/2-20	17	3,962	132
MSF10	MSFL10	15.88	19.05	12.29	63.50	38.10	25.40	22.23	28.58	34.93	5/8-18	22	4,313	195
MSF12	MSFL12	19.05	22.23	15.06	73.03	44.45	28.58	25.40	33.32	39.67	3/4-16	18	6,274	295

MATERIALS

BALL **	BODY
52100 STEEL R/C 56 MIN. HARD CHROME PLATED	LOW CARBON STEEL ZINC PLATED, CHROMATE TREATED