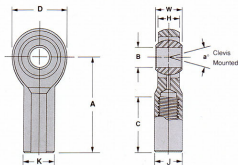


NF


PART NO.		DIMENSIONS IN INCHES										Radial Static Load Cap. Lbs.	Approx. Brg. Wt. Lbs.	
Right Hand	Left Hand	B + .0015 - .0005	W + .000 - .005	H ± .005	A ± .015	D ± .010	K ± .010	J ± .010	Ball Dia. Ref.	C + .062 - .031	Thread UNF-2B			a° Misalign. Angle
NF3	NFL3	1.90	.312	.250	1.062	.625	.406	.312	.437	.562	10-32	13	1,311	.038
NF4	NFL4	2.500	.375	.281	1.312	.750	.469	.375	.500	.750	1/4-28	16	1,686	.050
NF5	NFL5	.3125	.437	.344	1.375	.875	.500	.437	.625	.750	5/16-24	14	2,580	.092
NF6	NFL6	3.750	.500	.406	1.625	1.000	.667	.562	.719	.937	3/8-24	12	3,503	.152
NF7	NFL7	.4375	.562	.437	1.812	1.125	.750	.625	.812	1.062	7/16-20	14	4,218	.198
NF8	NFL8	5.000	.625	.500	2.125	1.312	.875	.750	.937	1.187	1/2-20	12	5,622	.329
NF10	NFL10	.6250	.750	.562	2.500	1.500	1.000	.875	1.125	1.500	5/8-18	16	7,364	.477
NF12	NFL12	.7500	.875	.667	2.875	1.750	1.125	1.000	1.312	1.750	3/4-16	14	10,816	.723

PART NO.		DIMENSIONS IN MILLIMETERS										Radial Static Load Cap. Kilograms	Approx. Brg. Wt. Grams	
Right Hand	Left Hand	B + .0381 - .0127	W + .000 - .127	H ± .127	A ± .381	D ± .254	K ± .254	J ± .254	Ball Dia. Ref.	C + 1.574 - .767	Thread UNF-2B			a° Misalign. Angle
NF3	NFL3	4.83	7.92	6.35	26.97	15.88	10.31	7.92	11.10	14.27	10-32	13	595	17
NF4	NFL4	6.35	9.53	7.14	33.32	19.05	11.91	9.53	12.70	19.05	1/4-28	16	765	27
NF5	NFL5	7.94	11.10	8.74	34.93	22.23	12.70	11.10	15.88	19.05	5/16-24	14	1,170	42
NF6	NFL6	9.53	12.70	10.31	41.28	25.40	17.45	14.27	18.26	23.80	3/8-24	12	1,589	69
NF7	NFL7	11.11	14.27	11.10	46.02	28.58	19.05	15.88	20.62	26.97	7/16-20	14	1,913	90
NF8	NFL8	12.70	15.88	12.70	53.98	33.32	22.23	19.05	23.80	30.15	1/2-20	12	2,550	149
NF10	NFL10	15.88	19.05	14.27	63.50	38.10	25.40	22.23	28.58	38.10	5/8-18	16	3,340	216
NF12	NFL12	19.05	22.23	17.45	73.03	44.45	28.58	25.40	33.32	44.45	3/4-16	14	4,906	328

MATERIALS

BALL *	RACE	BODY
CARBON STEEL-CASE HARDENED, ZINC PLATED	TEFLUBE GTN MOLDED MATERIAL	LOW CARBON STEEL, ZINC PLATED, CHROMATE TREATED